

CERTIFIED LAND CORNER RECORDATION

DESCRIPTION OF CORNER EVIDENCE FOUND, AND ORIGINAL RECORD (if known)

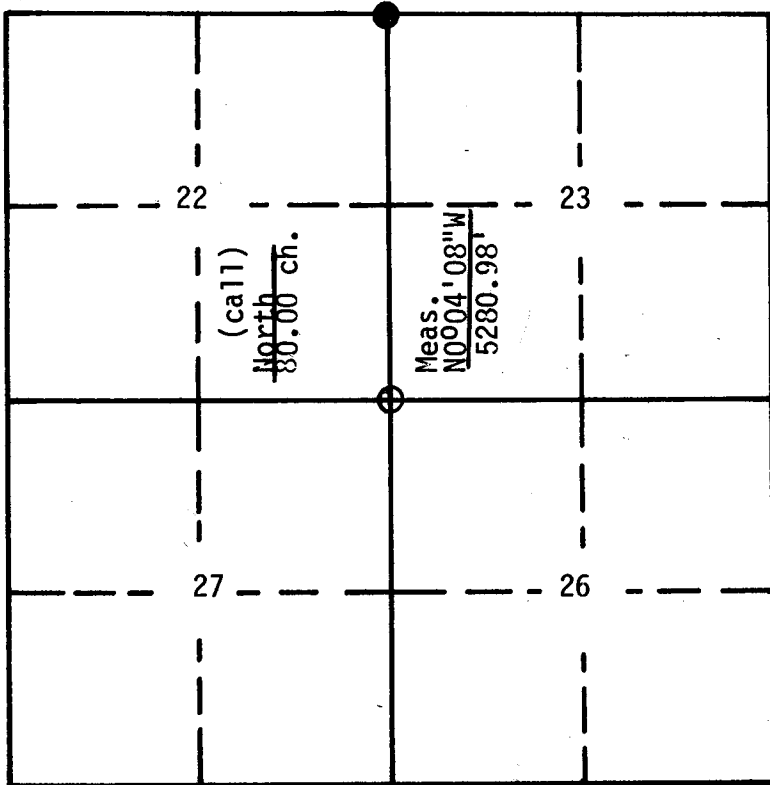
Record: Set a limestone 18x12x4 for corner to sections 14, 15, 22, and 23.

DESCRIPTION OF MONUMENT AND ACCESSORIES ESTABLISHED
TO PERPETUATE THE ORIGINAL LOCATION OF THIS CORNER:

Found: Set limestone 10"x7", 3" above ground marked with 3 notches on South edge and 2 notches on East face. A fence corner post is located 33' East.

Set: A green metal post 5.0' East.

SKETCH, WITH COURSE AND DISTANCE TO ADJACENT CORNER IF DETERMINED IN THIS SURVEY.
(May Sketch or Paste Reproduction on Reverse Side.)



Section 23 T: 17N R: 66W

- corner filed--this form
- controlling corner

DETAILS

Basis of bearings were established from the record bearing between the Northwest and North 1/4 section corners of Section 27, T17N R66W.

Surveyed: October 24, 1983

Job # 83105.000

I, Randall J. Rowley certify that I have carefully performed or reviewed the work done on the diagrammed corner as reported on this recordation form and approve the same.

Randall J. Rowley 3888
Signature of Surveyor Registration No.

STATE OF WYOMING,
Office of Clerk and Recorder,
County of Laramie

725445

This "corner record" was filed for record on the DEC 9 day of 1983, 1983, was noted on the cross-index plat and is assigned page No. , in book No. .

Janet C Whitehead
County Official

Cross Index No. _____	T. _____	R. _____	Mer. _____
_____	T. _____	R. _____	Mer. _____
_____	T. _____	R. _____	Mer. _____
_____	T. _____	R. _____	Mer. _____
_____	T. _____	R. _____	Mer. _____
_____	T. _____	R. _____	Mer. _____
_____	T. _____	R. _____	Mer. _____

N-17